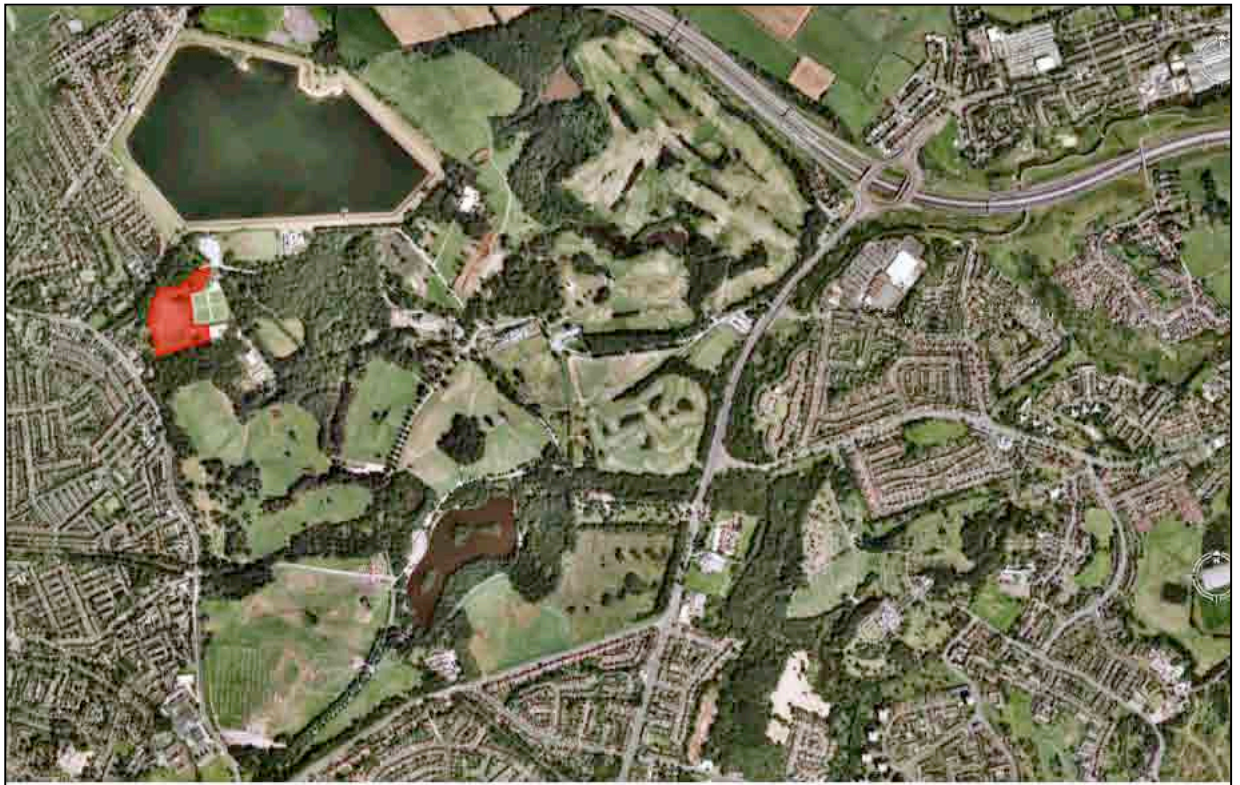


SPORTING ACTIVITY AT HEATON PARK GOALS SOCCER CENTRE PLC PROPOSAL UPDATE

A new sports facility has been proposed for Heaton Park to be built in the north-west corner of the park, next to the internationally renowned Bowls Complex. The 3.4 hectare site is a further development of the park's Sport Zone, which is an element of the Restoration Masterplan for Heaton Park agreed by English Heritage and The Heritage Lottery Fund with Manchester City Council. The Sport Zone and the new facility located within it do not intrude on the historic core of the park, so activities around Heaton Hall and the Farm Centre and other areas of the park will carry on as normal, and there will be plenty of green space left in the 260 hectare park for informal outdoor fun.





- A - Papal Fields
- B - SW Parkland
- C - Sports and Utilities
- D - The Pleasure Ground
- E - Grassland south of the house
- F - Edwardian Park
- G - Sheepfoot Lane grassland
- H - Golf course
- I - The river valley
- J - Kennel field, Spring field and the Dover House



- Listed Buildings
- A - Heaton Hall, Grade I
 - B - Former Stables, Grade II
 - C - Temple, Grade II*
 - D - Dower House, Grade II*
 - E - Grand Lodge, Grade II*
 - F - Smithy Lodge, Grade II*
 - G - Colonnade, Grade II*
 - H - Sundial, Grade II
 - I - Rose Cottage, Grade II

- Footpaths around the proposed development site
- Vehicular access around the proposed development site
- Extent of Proposed Development Site

MULTI SPORT OFFER

The multi sport offer provides a range of activities for both young and old including tennis, netball, small sided football and climbing. There will also be changing facilities that will also be used in conjunction with the existing full size grass pitches, meeting rooms and a refreshment area.



BENEFITS OF A NEW SPORTS FACILITY AT HEATON PARK

- Free access by schools and key groups through a comprehensive community sports programme
- Contribution to continuing improvements at Heaton Park for future generations to enjoy, such as tree planting and environmental projects
- Development of sporting talent and access to high quality provision
- Increasing access to part of the park, through increased opening hours, to a wider part of the community
- Improving and increasing facilities available to the community in the local area
- Improving the health and well being of those who regularly use the facility
- Provision of employment opportunities in the local area
- Delivery of the park's Restoration Masterplan through continued investment into improved facilities



HEATON PARK WORKS IN PARTNERSHIP WITH MANY ORGANISATIONS

Heaton Park is managed by Manchester City Council Leisure Services and works successfully with a number of different organisations to provide many services to our customers. For example, improvements and youth activities at Heaton Park's award winning golf course have been delivered in partnership with private sector operators for the last 15 years.

Goals Soccer Centres has over 11 years experience in providing sports facilities. They currently operate 35 facilities across the UK, with many facilities located within park and playing field environments.

Goals have a strong track record of providing access for various community groups such as local schools and youth development groups. An important aspect of the proposed facilities is the free access to facilities for key users such as schools, youth sports development groups and local residents at specific times.

FURTHER INFORMATION

The restoration of Heaton Park's historic landscape was completed in 2004. As part of this project, the bowls and tennis sports facilities that were previously located within the historic core of the park were removed, with the new Sport Zone being created. The new facility will also include replacement tennis courts.

The proposed site is not located in the historic core of the park, or near to any children's play areas, so will not impact on people's enjoyment when visiting the rolling landscapes and historic buildings.

Heaton Park has a range of habitats that creates a diversity of species within the park, some of which are rare. As a result, Greater Manchester Ecology Unit has designated 2 sites to be of Special Biological Importance. The proposed location of the multi-sports facility would not affect this.

A dedicated car park will be provided for this facility.



THE PLANNING APPLICATION

A Planning Application has been submitted to Manchester City Council's Planning Department, which will meet on 11 February 2010 to make a decision on this application.

Comments to be received for Application No 090370/FO/2009/N1 to be sent by
9th February to:

Robert Griffin
PO Box 463
Town Hall Extension
Manchester
M60 3NY

Or comments can be left by the same deadline on the Planning website at www.manchester.gov.uk/planning/publicaccess